



School Based Health Center Model

ACCESSIBLE, AFFORDABLE, AND QUALITY HEALTHCARE

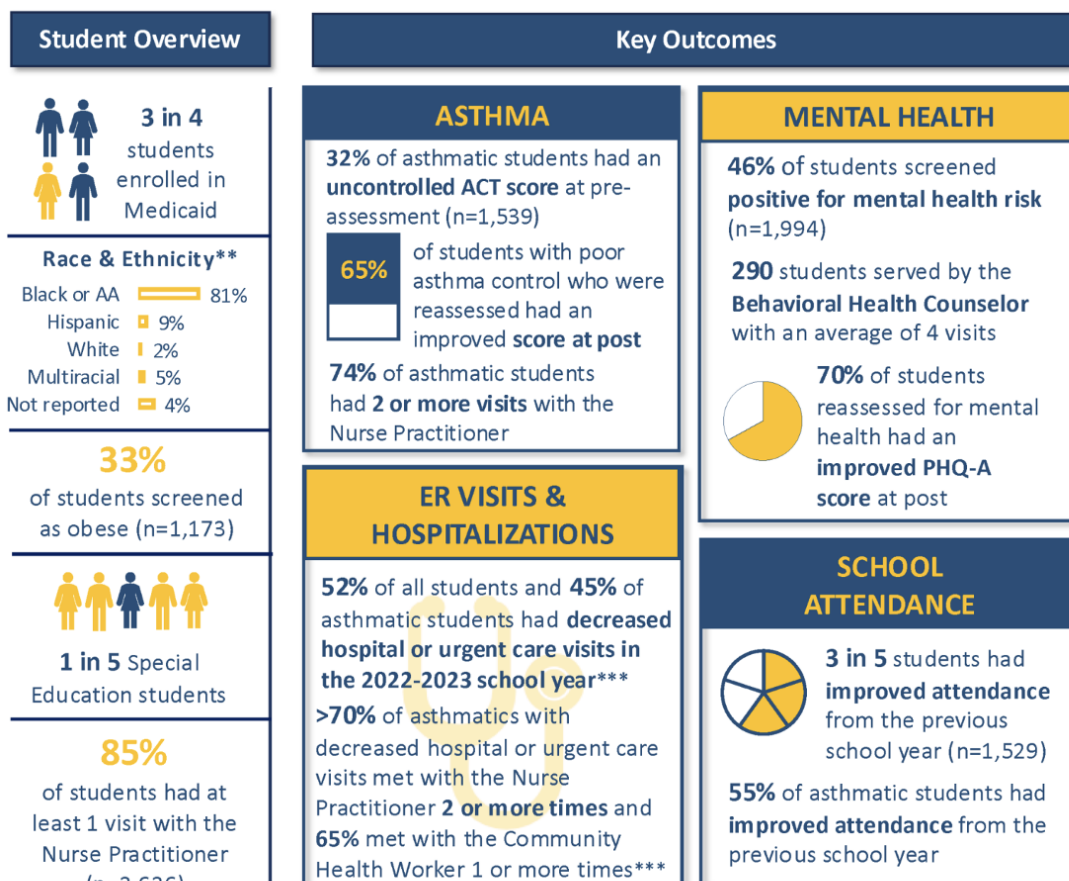
SCALING AND REPLICATION STRATEGY

Mary Lauren Salvatore
ml.salvatore@education-plushealth.com

OVERVIEW

Education Plus Health, a nonprofit health services organization based in Philadelphia, Pennsylvania, presents the following scaling and replication strategy and plan to ensure students have access to quality and affordable healthcare. School-based health centers are known for **mitigating common barriers to healthcare for students and families** such as time, transportation, and cost or health insurance obstacles by providing **high-quality, affordable, and accessible healthcare services** that meet youth where they spend most of their waking hours Monday through Friday - in schools.

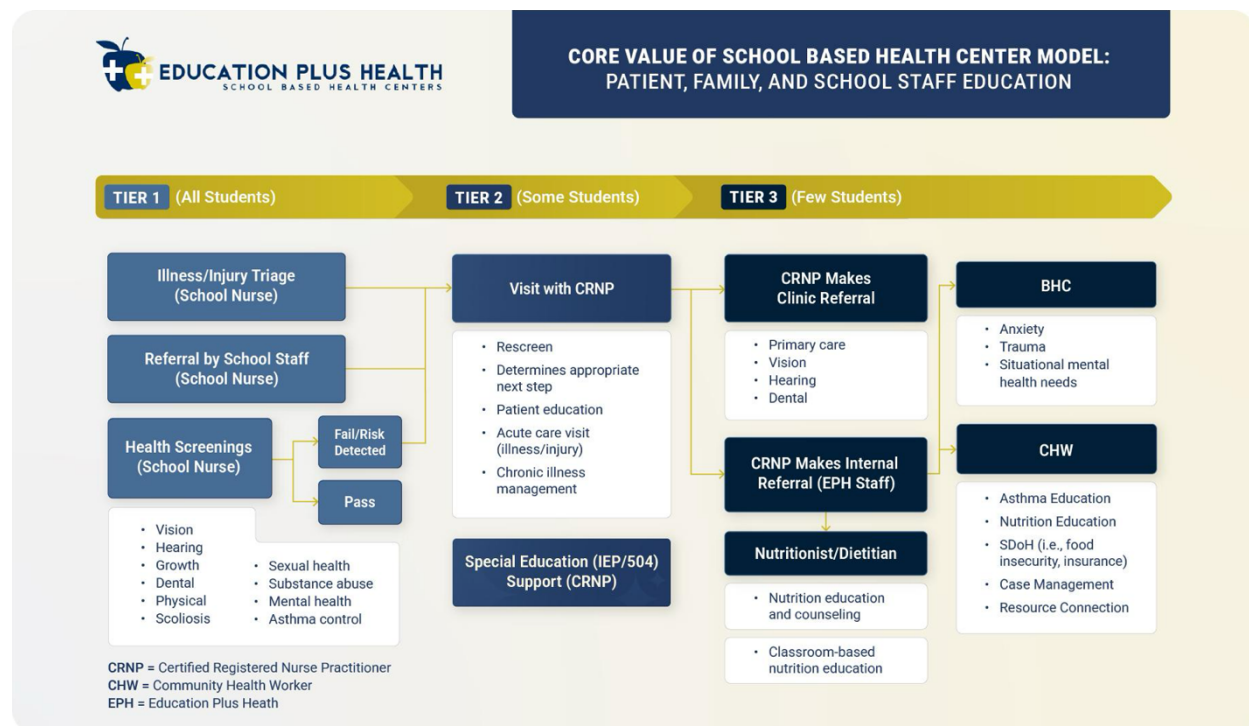
Education Plus Health has a track record of **improving health and educational outcomes for students** by increasing attendance and decreasing emergency room visits and hospitalizations for students with asthma, improving asthma control scores, and improving mental health risk scores.



*Vaccinations are only administered at select EPH School-Based Health Centers ***ER, Hospitalization, & Urgent care visit data include Keystone & Health Partner members only
 **Not displayed because less than 1% = American Indian/Alaska Native, Asian, and Native Hawaiian

SCHOOL BASED HEALTH CENTER MODEL

Capitalizing on [Pennsylvania's state-mandated health screening schedule](#) for students, Education Plus Health's school-based health center model starts by providing universal screening in addition to traditional entry points to the School Nurse such as illness, injury, and medication management. By implementing a comprehensive clinic, students needing care beyond what the School Nurse can provide are able to be seen by a Certified Registered Nurse Practitioner (CRNP), Behavioral Health Counselor (BHC), Community Health Worker (CHW), or Nutritionist/Dietitian. This model enables students to get the care they need when they need it, at no cost to families.



SCHOOL-BASED HEALTH CENTER REVENUE STRUCTURE

Education Plus Health school-based health centers, outside of start-up costs, are financial sustainable and cost neutral by generating revenue through two existing revenue sources:

- 1) **Contracts with schools**, based on services and staff provided and school enrollment
- 2) **Healthcare insurance reimbursement** via public and private payors

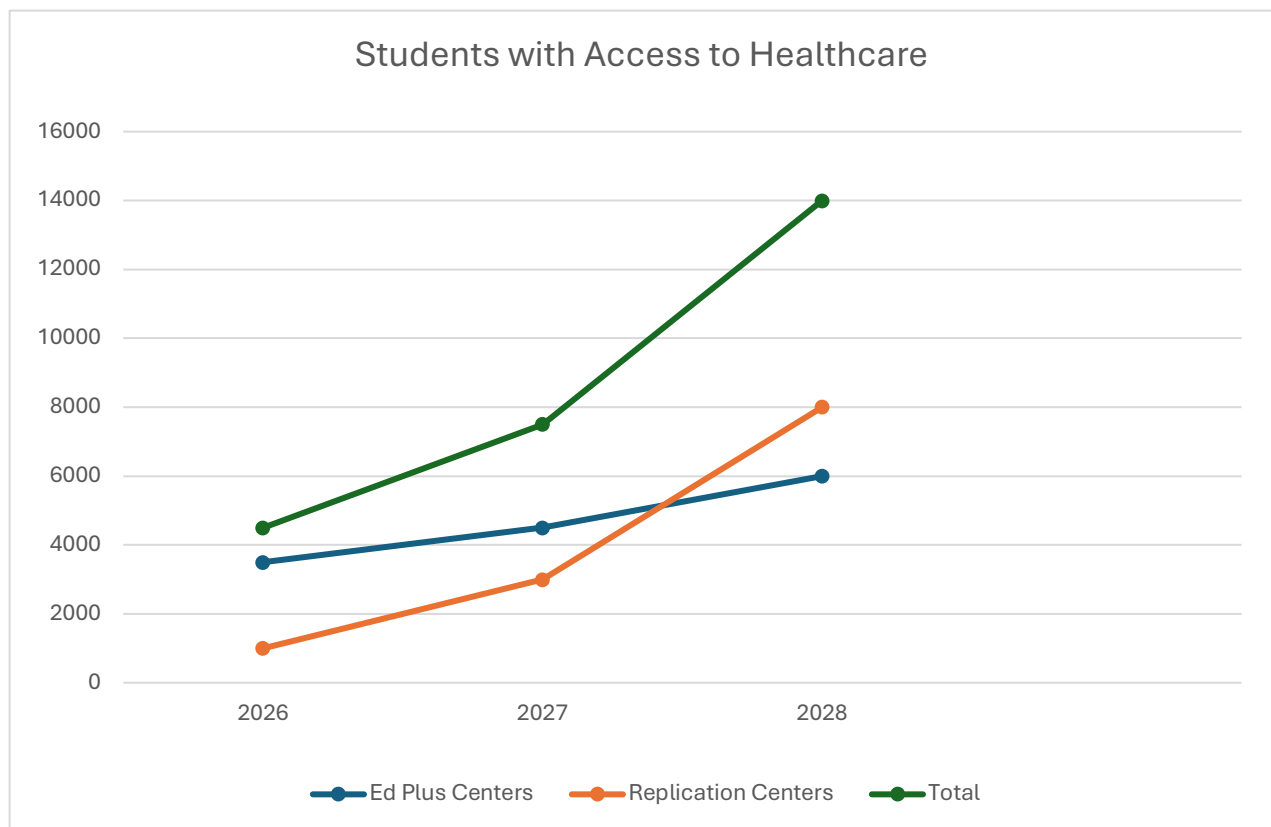
SCALING AND REPLICATION STRATEGY

Expansion through Replication

Education Plus Health seeks to engage with academic partners in K-12 schools and districts to provide **direct school-based health center services in high-need environments**.

Replication through Technical Assistance

As a new service line, Education Plus Health seeks **to provide consultation and technical assistance to health-focused, community-based organizations and other healthcare or academic entities** interested in establishing school-based health centers in their respective communities.



PARTNERSHIP OPPORTUNITIES

Invest in our future: School-based health clinics fill a critical gap in healthcare access for many families in a variety of different geographic settings. At a time when the public safety net is at major risk, Education Plus Health seeks financial support in the form of start-up capital to sustain and expand our impact.

Partner with us to open a School Based Health Center Model: Our ability to combine school nursing, primary care, behavioral health, nutrition, and social determinants of health support under one umbrella makes our model not only unique, but highly convenient for families. We are open to partnerships with schools to provide accessible, affordable, and quality healthcare.

Replicate our School Based Health Center Model: Our ability to combine school nursing, primary care, behavioral health, nutrition, and social determinants of health support under one umbrella makes our model not only unique, but highly convenient for families. We have the model and technical assistance tools to build your capacity to replicate this model within your setting.

Contact Information

Mary Lauren Salvatore, Executive Director

ml.salvatore@educationplushealth.com

(267) 324-5707