

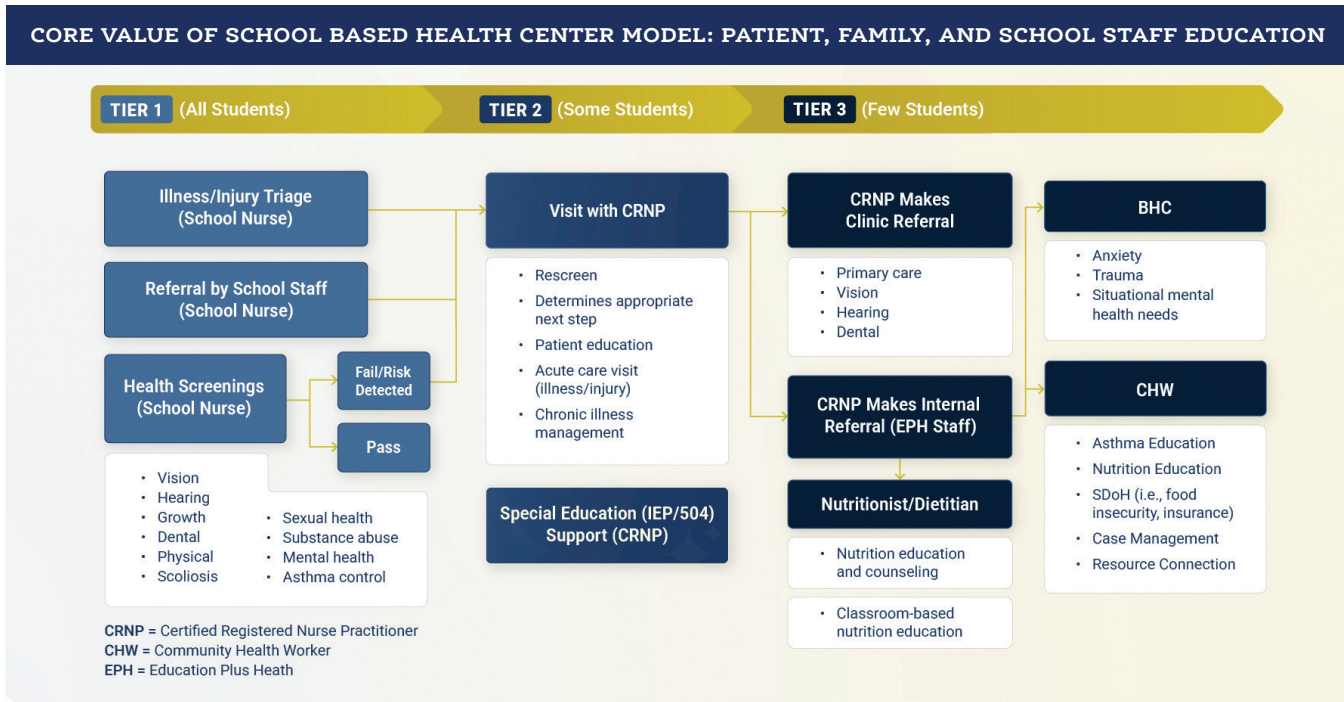
## ➔ WHERE WE'RE HEADED • 2026-2028

### EXPANSION THROUGH REPLICATION

We seek to engage with schools and districts to provide SBHCs in high-needs areas. See our model below.

### REPLICATION THROUGH TECHNICAL ASSISTANCE

We plan to implement a new service line of training and technical assistance to support other organizations with building out SBHCs in their communities.



# 2024-2025 ANNUAL REPORT



## PARTNERSHIPS & FUNDERS

### SCHOOL-BASED HEALTH CENTER PARTNERS

Deep Roots Charter School  
Kipp DuBois Collegiate Academy  
LaSalle Academy  
Lindley Academy Charter School at Birney  
Memphis Street Academy at JP Jones

### EDUCATIONAL PARTNERS

Building 21 High School  
MLK High School  
Vaux Big Picture High School  
Belmont High School

### FUNDERS

Access Matters  
Keystone First Health Plan  
Philadelphia Department of Public Health  
Philadelphia District Attorney's Office  
Philadelphia Office of Public Safety  
Pennsylvania Commission on Crime and Delinquency  
Pennsylvania Department of Health  
Pennsylvania Department of Education  
Pennsylvania Department of Human Services  
Stoneleigh Foundation  
Scattergood Foundation  
The Gordon Charter Foundation

## LEADERSHIP & BOARD OF DIRECTORS

### LEADERSHIP TEAM

**Mary Lauren Salvatore**, MPH, CHES, Executive Director  
**Paula Navas**, Director of Finance  
**Emily Brennecke**, Senior Accountant  
**Russell Reyes**, Director of Practice Management  
**Crystal Ayala**, Director of Health Promotion  
**Keanna Austin**, Director of Revenue Cycle Management  
**Amanda Torres**, LPN School Nurse Manager

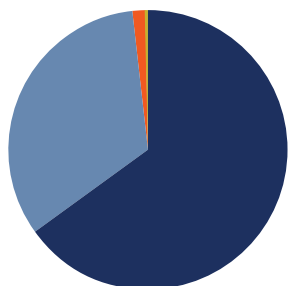
### BOARD OF DIRECTORS

**Wendy-Anne Roberts-Johnson**, MSW, Chair  
**Nicholas Torres**, President  
**David Castro**, JD, Secretary  
**Eli Silverman**, LLP, Treasurer  
**Mike Clark**, Member  
**Sunny Gaye-Hallowell**, PhD, APRN, Member  
**Barbara Mattleman**, Member  
**Dione Cash**, MD, Member

## ORGANIZATIONAL REVENUE

FY25: \$\$\$

- GRANTS & CONTRIBUTIONS
- HEALTH CLINIC REIMBURSEMENT
- EARNED PROGRAM SERVICES
- OTHER



## LETTER FROM THE NEW EXECUTIVE DIRECTOR

### DEAR FRIENDS:

I am so honored to be serving as the new Executive Director at Education Plus Health! In my first several months on the job, I've learned a few important things about the team here. 1: The spirit of this organization shines through in day-to-day interactions with staff, students, and school partners. 2: We are a team committed and dedicated to the work we do to advance health equity in Philadelphia by providing high quality healthcare and education.

After spending the last several years in state government in Georgia, I am energized by the potential at Education Plus Health and throughout the city for growing our footprint in school health services and programs. Over the next several months, I look forward to continuing to build intentional partnerships that help to propel our model forward and expand our impact to those who need it most.

This annual report is an opportunity to share all the incredible work that was accomplished in the 24-25 school year as well as to present where we are headed in the next three years. Education Plus Health plans to expand our impact by growing into more schools in Philadelphia and across the Commonwealth, as well as by creating a technical assistance arm to build the capacity of other organizations to start school-based health centers.

If you'd like to connect and learn more about our current programming or future plans, please reach out!

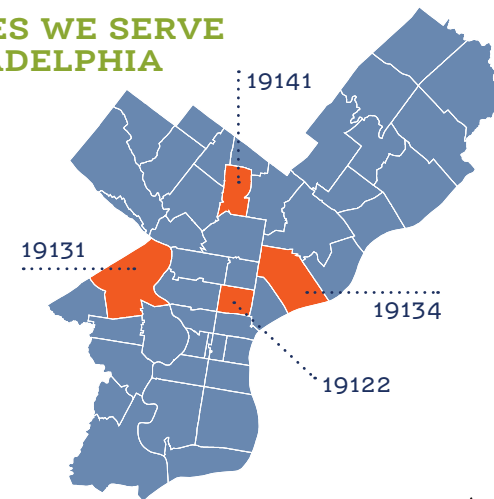
In good health,

**Mary Lauren Salvatore**  
Executive Director



## SCHOOL-BASED HEALTH CENTERS

### ZIP CODES WE SERVE IN PHILADELPHIA



### DEMOGRAPHICS 2024-2025

RACE/ETHNICITY	
Black or African American	44%
American Indian or Alaska Native	0%
Asian	0%
White	5%
Identified as White & Hispanic	26%
Multiple Race	4%
Native Hawaiian or other Pacific Islander	0%
Unknown	33%
Other	14%

INSURANCE STATUS		USER AGE	
CHIP	6%	0-11	39%
Medicaid	76%	12-17	58%
Private	6%	18-20	3%
Uninsured	8%	21+	0%
Other	3%		
Unknown	0%		

### BY THE NUMBERS

<b>STUDENTS SERVED</b>
<b>1413</b> Served by Nurse Practitioners
<b>357</b> Served by Community Health Workers
<b>195</b> Served by Behavioral Health Counselors
<b>STUDENTS SCREENED FOR STATE-MANDATED HEALTH SCREENINGS</b>
<b>2114</b> Vision
<b>888</b> Hearing
<b>534</b> Scoliosis
<b>2134</b> Body Mass Index (BMI)

## + STUDENT OUTCOMES BY PROGRAM +

### ASTHMA

- 36%** Asthmatic students with uncontrolled asthma
- 77%** Improved asthma control post-intervention
- 56%** Asthmatic students with 2+ visits to NP

### MENTAL HEALTH

- 36%** Students with identified mental health risk
- 76%** Students with improved mental health screen post-intervention

### SOCIAL DETERMINANTS OF HEALTH

- 352** SDOH screens administered
- 126** Students provided asthma education
- 228** Students provided nutrition education

## ROOM2BREATHE ASTHMA HOME VISITING

Last year, the Room2Breathe program served **202** youth age 2-14 with asthma home visiting support led by Community Health Workers. We engaged with **16** pediatric provider sites and **4** major payors across Philadelphia to enroll youth in the program. As a result, nearly **800** home visits were completed, and both inpatient admissions and emergency department visits decreased.



Among patients enrolled in Jefferson Health Plans for FY25, there was a 52.4% reduction in inpatient admissions (per 1,000 members) and a 19.7% reduction in emergency department visits (per 1,000 members).

## HEALTH RESOURCE COORDINATOR PROGRAM

- 440** Students served
- 430** Referrals made to sexual/reproductive healthcare providers

### MAJOR HIGHLIGHTS

Exceeded goals in condom distribution (4,000+) and HRC visits (1,200+)



## 21ST CENTURY COMMUNITY LEARNING CENTER

**291**

Students served in '24-25, a 14% increase from '23-24

**12**

After school clubs

### MAJOR HIGHLIGHTS

- Expanded programming to meet student interests such as sports/fitness and the visual arts.
- Provided resources to families such as eye exams and glasses, healthy recipes and kitchenware



## CLASSROOM-BASED SEXUAL HEALTH EDUCATION

Served **986** middle and high school students at **9** schools/community sites with classroom-based sexual health education through Be Proud, Be Responsible and Draw the Line curriculums.

